



## STEP 1

# IDENTIFY THE HAZARDS

Dangerous property: Holes, ditches, canopy structures

People on site: Your staff, contractors and visitors

Machinery: Yours, or contractor's equipment



**ORCHARDS ARE COMPLEX**

But knowing your health and safety responsibilities is easy as **Consult, Cooperate and Coordinate.**



## STEP 2

# SIZE UP THE RISKS

Can the risk be removed?

How likely is harm?

What harm could happen?

Who's the best person to stop it?



## ORCHARDS ARE COMPLEX

But knowing your health and safety responsibilities is easy as **Consult, Cooperate and Coordinate.**

### STEP 3

## MANAGE THE RISKS

Make a Health & Safety Plan that: records the risks, who'll manage them and what the measures are to control them

Discuss with contractors how they will control risks, including use of sub-contractors

Talk to workers about risks and how to control them

Agree on your Health & Safety Plan with all workers and other PCBUs



**ORCHARDS ARE COMPLEX**

But knowing your health and safety responsibilities is easy as **Consult, Cooperate and Coordinate.**



## STEP 4

# MONITOR & CONTROL

Make health and safety part of everyday work for everyone who visits your orchard

Make sure control measures are being used and are working

Have regular staff meetings, catch ups with other PCBUs, inspections and walk-throughs



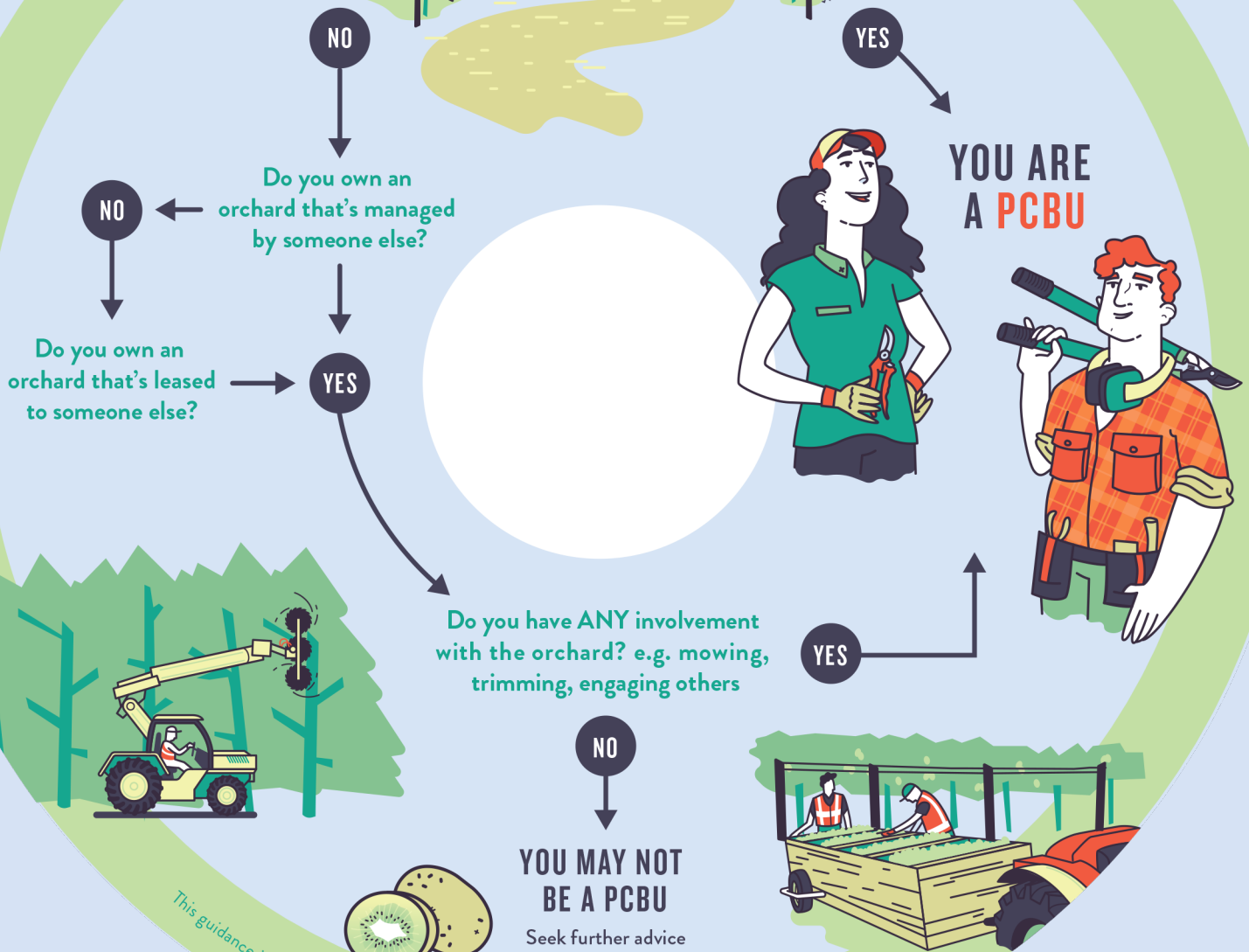
## ORCHARDS ARE COMPLEX

But knowing your health and safety responsibilities is easy as **Consult, Cooperate and Coordinate.**



**PCBU, does this mean you? See if you're a Person Conducting a Business or Undertaking (PCBU) under the Health and Safety at Work Act, and what you need to do.**

# DO YOU OWN & MANAGE YOUR ORCHARD?



This guidance is part of Zespri's Enforceable Undertaking accepted by WorkSafe NZ in October 2017.